

# FISHWAY STATUS REPORT

**Date:** 10/25/2014  
**Inspection Period:** 10/19 thru 10/25/2014

All JD Fishways are inspected twice per day during fish season, March. 1 - Nov. 31  
 Frequent monitoring of the PLC displays in SMF Fisheries Office as necessary.

	<b>JOHN DAY DAM</b>	
	JD/WC Project-Fisheries P.O. Box 823 Rufus, Oregon 97050 Phone: 541-506-7860	

<b>John Day Dam</b>	<b>Inspections</b>	<b>Criteria</b>	<b>Total Number of Inspections: 14</b>	<b>Temperature: 63 F</b>
	<b>Out of Criteria</b>	<b>Limit</b>		<b>Secchi: 5.0 Ft.</b>
<b>NORTH FISHWAY</b>			In regular service. Five AWS pumps available since 4/11	
Exit differential	0	≤ 0.5'		
Exit Control weirs	0	High setting	High setting is normal for JDN	
Count station differential	0	≤ 0.3'		
Weir crest depth (DS gauge)	0	1.0' ± 0.1'		
Entrance differential	0	1.0' - 2.0'	AVG 1.5	
<b>SOUTH FISHWAY</b>			In regular service with all three AWS turbines	
Exit differential	0	≤ 0.5'		
Exit Control weirs	0	MID setting	MID is normal for JDS	
Count station differential	0	≤ 0.3'		
Weir crest depth (US gauge)	0	1.0' ± 0.1'		
South entrance differential	0	1.0' - 2.0'	AVG 1.5	
Entrance weir SE1	0	depth (≥ 8')	AVG 8.4	
Collection channel velocity	0	1.5 - 4 fps	AVG 3.11	
Bay 1 differential	0	1.0' - 2.0'	AVG 1.8	
N. Entrance PH(Bay 19)differential	0	1.0' - 2.0'	AVG 1.4	
Entrance weir NE1	0	depth (≥ 8')	AVG 8.5	
Entrance weir NE2	0	depth (≥ 8')	AVG 8.4	
<b>JUVENILE PASSAGE</b>			SMF continues in bypass for the full flow PIT tags detections through 24 November	
Forebay/bypass conduit differential	0	4.0' - 5.0'	AVG 4.6	
Submersible traveling screens	0	visual inspect	October STS/VBS camera inspection 10/20-25: no problems were found.	
Turbine trashrack drawdown	0	<1.5', wkly	Next raking of intake trashracks is scheduled for the last week of October	
Vert barrier screen drawdown	0	<1.5', wkly	Gateway drawdown performed twice a week or more frequently if high river debris loads	
Spill volume	0	1.6 kcfs	Bay 2 at 1.6 kcfs daylight only through November	
Spill pattern	0	per FPP	Bay 2 at 1.6kcfs to provide additional attraction to JD North Entrance.	
Turbine Unit Priority	0	per FPP	Planned BPA Line 1 (MU1-4) outage started on 10/21. RTS is 12/5/14	
Turbine 1% Efficiency	0	per FPP		

## SMOLT MONITORING FACILITY

**Operations:** Sampling season ended on 9/15; SMF continues in bypass for the full flow PIT tags detections until 24 November.

JD Fisheries crew works an abbreviated 18 hrs/7 swing shift schedule as required by FPP.

**Debris:** N/A due to bypass / DA Separator OOS.

**Maintenance:** Annual winter maintenance activities are planned to commence in December. The Sampling Building's piping has been already winterized by JD Fisheries crew, with Mr. Kovalchuk, PSMFC biologist assisting. Cleanup inside and outside of the Building underway.

**Research:**

None

**Fallbacks:** AVG: #DIV/0! MAX: #DIV/0! MIN: #DIV/0! System in Primary By-pass

## OTHER ISSUES:

### JOHN DAY

**BIRDS :** see the Avian Numbers tab. We report all species and locations, but in reality only gulls in the tailrace BRZ are relevant at JD.

Avian line # 26 was found failed/its end in the water on 9/1. This is shore- to-shore line and immediately adjacent to the previously missing # 27.

JD Engineering preparing SOW for the re-installation contract, which is expected in March '15; funding by special CRFM \$.

**Operations:**

JD North Fishway is in regular service and meeting the FPP criteria.

JD South Fishway in regular service and meeting the FPP criteria.

Bay 2, 1.6 kcfs daylight spill from Bay 2 continues daily, September through November to provide additional attraction to JD North Entrance.

**Maintenance:**

JD North AWS pumps - five out of total six are available for service since 4/11. AWS pump # 4 continues in OOS status due to its lower bearing issues.

JD Engineering/contractor continue with its repairs.

Calibration: 10/10/2014 All sensors were within the criteria of 0.3' .

JD South Fishway's bay 19 tailrace sensor was determined erratic/failed on 7/22 and TR'd immediately. JD Electrical found it clogged up by debris and cleaned it up on 7/30. Awaiting for a new sensor to replace it. JD Fisheries takes frequent manual measurements to keep the fishway in criteria.

Gatewell Drawdown: 10/22/2014. No units measured greater then 1.3 ft of differential for this reporting week debris loading is light..

**Research:**

2014 Adult Salmonids counting by Normandeau Associates continues through October 31 as required by FPP.

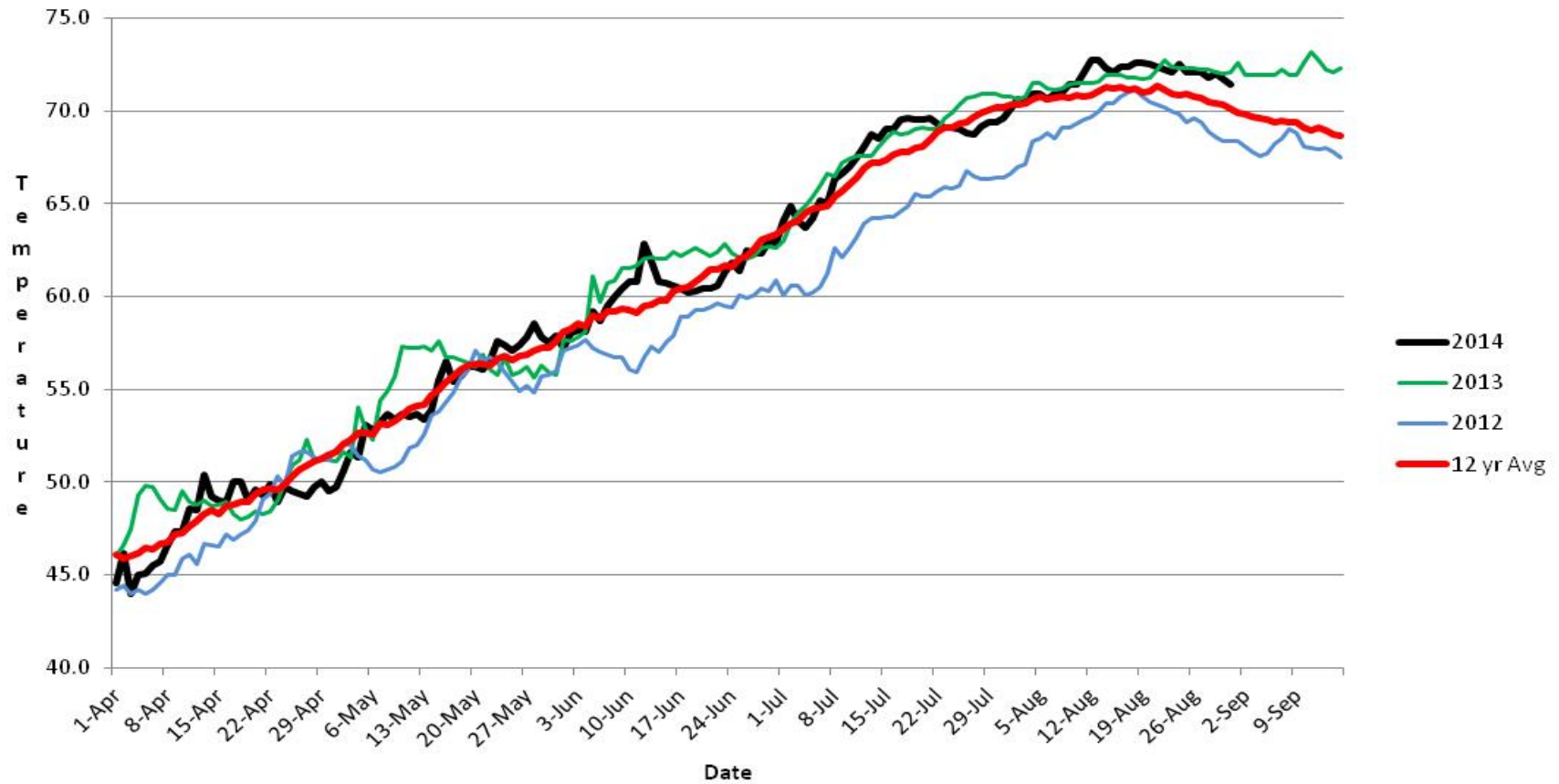
Adult Salmonids Radio telemetry evaluations are ongoing at both JD adult fishway. University of Idaho crew is in charge of detecting of all adult salmonids, which were tagged and released at Bonneville Dam.

Kevin Moynahan

Date: \_\_\_ 30-Oct-14

OPM John Day/Willow Creek Project

### JDA SMF Water Temp



# JDA COLLECTION CHANNEL VELOCITY

Date 24-Oct-14

By: mz, pr

Bay(s)	Time	Sec.	Velocity (f/s)
0-2	01:13.0	73	2.47
2 - 4	0:02:10	130	3.16
4 - 6	0:03:11	191	2.95
6 - 8	0:04:17	257	2.73
8 - 10	0:05:15	315	3.10
10 - 12	0:06:14	374	3.05
12 - 14	0:07:13	433	3.05
14 - 16	0:08:11	491	3.10
16 - 18	0:08:52	532	4.39

**3.11**

## 2014 JDA Piscivorous Bird Counts

F=foraging, NF=non-foraging

Date	Session	Time (24 hr)	Zone	Gull		Cormorant		Caspian tern		AWPE		Grebe		Total birds in zone	Observer
				F	NF	F	NF	F	NF	F	NF	F	NF		
12-Oct-14	1	7:30	PHFB	0	0	0	0	2	0	0	0	49	199	250	pete
12-Oct-14	1	7:30	SWFB	0	230	0	0	0	0	0	0	0	0	230	pete
12-Oct-14	1	7:30	PH1	0	0	4	0	0	0	0	0	0	0	4	pete
12-Oct-14	1	7:30	PH2	0	0	0	0	0	0	0	0	0	0	0	pete
12-Oct-14	1	7:30	PH3	0	0	0	0	0	0	0	0	0	0	0	pete
12-Oct-14	1	7:30	SW1	0	0	0	0	0	0	0	0	0	0	0	pete
12-Oct-14	1	7:30	SW2	0	0	0	0	0	0	0	0	0	0	0	pete
12-Oct-14	1	7:30	SW3	0	0	0	0	0	0	0	0	0	0	0	pete
12-Oct-14	2	14:00	PHFB	0	5	1	0	0	0	0	0	23	82	111	pete
12-Oct-14	2	14:00	SWFB	0	225	0	0	0	0	0	0	0	0	225	pete
12-Oct-14	2	14:00	PH1	0	0	0	0	0	0	0	0	0	0	0	pete
12-Oct-14	2	14:00	PH2	0	0	0	0	0	0	0	0	0	0	0	pete
12-Oct-14	2	14:00	PH3	0	0	0	0	0	0	0	0	0	0	0	pete
12-Oct-14	2	14:00	SW1	0	0	0	0	0	0	0	0	0	0	0	pete
12-Oct-14	2	14:00	SW2	0	0	0	0	0	0	0	0	0	0	0	pete
12-Oct-14	2	14:00	SW3	0	0	0	0	0	0	0	0	0	0	0	pete
13-Oct-14	1	7:30	PHFB	0	47	0	0	0	0	0	0	55	149	251	pete
13-Oct-14	1	7:30	SWFB	0	184	0	0	0	0	0	0	0	0	184	pete
13-Oct-14	1	7:30	PH1	5	0	5	0	0	0	0	0	0	0	10	pete
13-Oct-14	1	7:30	PH2	0	0	0	0	0	0	0	0	0	0	0	pete
13-Oct-14	1	7:30	PH3	0	0	0	0	0	0	0	0	0	0	0	pete
13-Oct-14	1	7:30	SW1	0	0	0	0	0	0	0	0	0	0	0	pete
13-Oct-14	1	7:30	SW2	0	0	0	0	0	0	0	0	0	0	0	pete
13-Oct-14	1	7:30	SW3	0	0	0	0	0	0	0	0	0	0	0	pete
13-Oct-14	2	14:00	PHFB	0	5	1	0	0	0	0	0	25	80	111	pete
13-Oct-14	2	14:00	SWFB	0	225	0	0	0	0	0	0	0	0	225	pete
13-Oct-14	2	14:00	PH1	0	0	0	0	0	0	0	0	0	0	0	pete
13-Oct-14	2	14:00	PH2	0	0	0	0	0	0	0	0	0	0	0	pete
13-Oct-14	2	14:00	PH3	0	0	0	0	0	0	0	0	0	0	0	pete
13-Oct-14	2	14:00	SW1	0	0	0	0	0	0	0	0	0	0	0	pete
13-Oct-14	2	14:00	SW2	0	0	0	0	0	0	0	0	0	0	0	pete
13-Oct-14	2	14:00	SW3	0	0	0	0	0	0	0	0	0	0	0	pete
14-Oct-14	1	7:30	PHFB	0	0	0	0	0	0	0	0	69	1001		pete
14-Oct-14	1	7:30	SWFB	0	440	0	0	0	0	0	0	24	31	495	pete

14-Oct-14	1	7:30	PH1	7	0	7	0	0	0	0	0	0	0	14	pete
14-Oct-14	1	7:30	PH2	0	0	0	0	0	0	0	0	0	0	0	pete
14-Oct-14	1	7:30	PH3	1	0	0	0	0	0	0	0	0	0	1	pete
14-Oct-14	1	7:30	SW1	0	0	4	0	0	0	0	0	0	0	4	pete
14-Oct-14	1	7:30	SW2	1	0	2	0	0	0	0	0	0	0	3	pete
14-Oct-14	1	7:30	SW3	0	0	0	0	0	0	0	0	0	0	0	pete
14-Oct-14	2	14:00	PHFB	0	0	0	0	0	0	0	0	0	0	0	pete
14-Oct-14	2	14:00	SWFB	0	0	0	0	0	0	0	0	0	0	0	pete
14-Oct-14	2	14:00	PH1	0	0	0	0	0	0	0	0	0	0	0	pete
14-Oct-14	2	14:00	PH2	0	0	0	0	0	0	0	0	0	0	0	pete
14-Oct-14	2	14:00	PH3	0	0	0	0	0	0	0	0	0	0	0	pete
14-Oct-14	2	14:00	SW1	0	0	0	0	0	0	0	0	0	0	0	pete
14-Oct-14	2	14:00	SW2	0	0	0	0	0	0	0	0	0	0	0	pete
14-Oct-14	2	14:00	SW3	0	0	0	0	0	0	0	0	0	0	0	pete
15-Oct-14	1	7:30	PHFB	0	0	0	0	0	0	0	0	134	0	134	DEK
15-Oct-14	1	7:30	SWFB	0	287	0	3	0	0	0	0	0	0	290	DEK
15-Oct-14	1	7:30	PH1	18	0	11	0	0	0	0	0	0	0	29	DEK
15-Oct-14	1	7:30	PH2	3	0	0	0	0	0	0	0	0	0	3	DEK
15-Oct-14	1	7:30	PH3	6	0	0	0	0	0	0	0	0	0	6	DEK
15-Oct-14	1	7:30	SW1	0	0	0	0	0	0	0	0	0	0	0	DEK
15-Oct-14	1	7:30	SW2	0	0	0	0	0	0	0	0	0	0	0	DEK
15-Oct-14	1	7:30	SW3	0	0	0	0	0	0	0	0	0	0	0	DEK
15-Oct-14	2	14:00	PHFB	0	185	0	0	0	0	0	0	0	0	185	Jim
15-Oct-14	2	14:00	SWFB	0	47	0	0	0	0	0	0	0	0	47	Jim
15-Oct-14	2	14:00	PH1	1	0	2	0	0	0	0	0	0	0	3	Jim
15-Oct-14	2	14:00	PH2	17	0	0	0	0	0	0	0	0	0	17	Jim
15-Oct-14	2	14:00	PH3	25	0	0	0	0	0	0	0	0	0	25	Jim
15-Oct-14	2	14:00	SW1	0	0	0	0	0	0	0	0	0	0	0	Jim
15-Oct-14	2	14:00	SW2	0	0	0	0	0	0	0	0	0	0	0	Jim
15-Oct-14	2	14:00	SW3	7	0	0	0	0	0	0	0	0	0	7	Jim
16-Oct-14	1	7:30	PHFB	0	89	0	0	0	0	0	0	61	0	150	DEK
16-Oct-14	1	7:30	SWFB	0	246	0	0	0	0	0	0	97	0	343	DEK
16-Oct-14	1	7:30	PH1	6	0	6	0	0	0	0	0	0	0	12	DEK
16-Oct-14	1	7:30	PH2	0	0	0	0	0	0	0	0	0	0	0	DEK
16-Oct-14	1	7:30	PH3	16	0	0	0	0	0	0	0	0	0	16	DEK
16-Oct-14	1	7:30	SW1	0	0	0	0	0	0	0	0	0	0	0	DEK
16-Oct-14	1	7:30	SW2	0	0	0	0	0	0	0	0	0	0	0	DEK
16-Oct-14	1	7:30	SW3	0	0	0	0	0	0	0	0	0	0	0	DEK
16-Oct-14	2	14:00	PHFB	0	110	0	0	0	0	0	0	0	0	110	Jim
16-Oct-14	2	14:00	SWFB	0	235	0	0	0	0	0	0	12	0	247	Jim

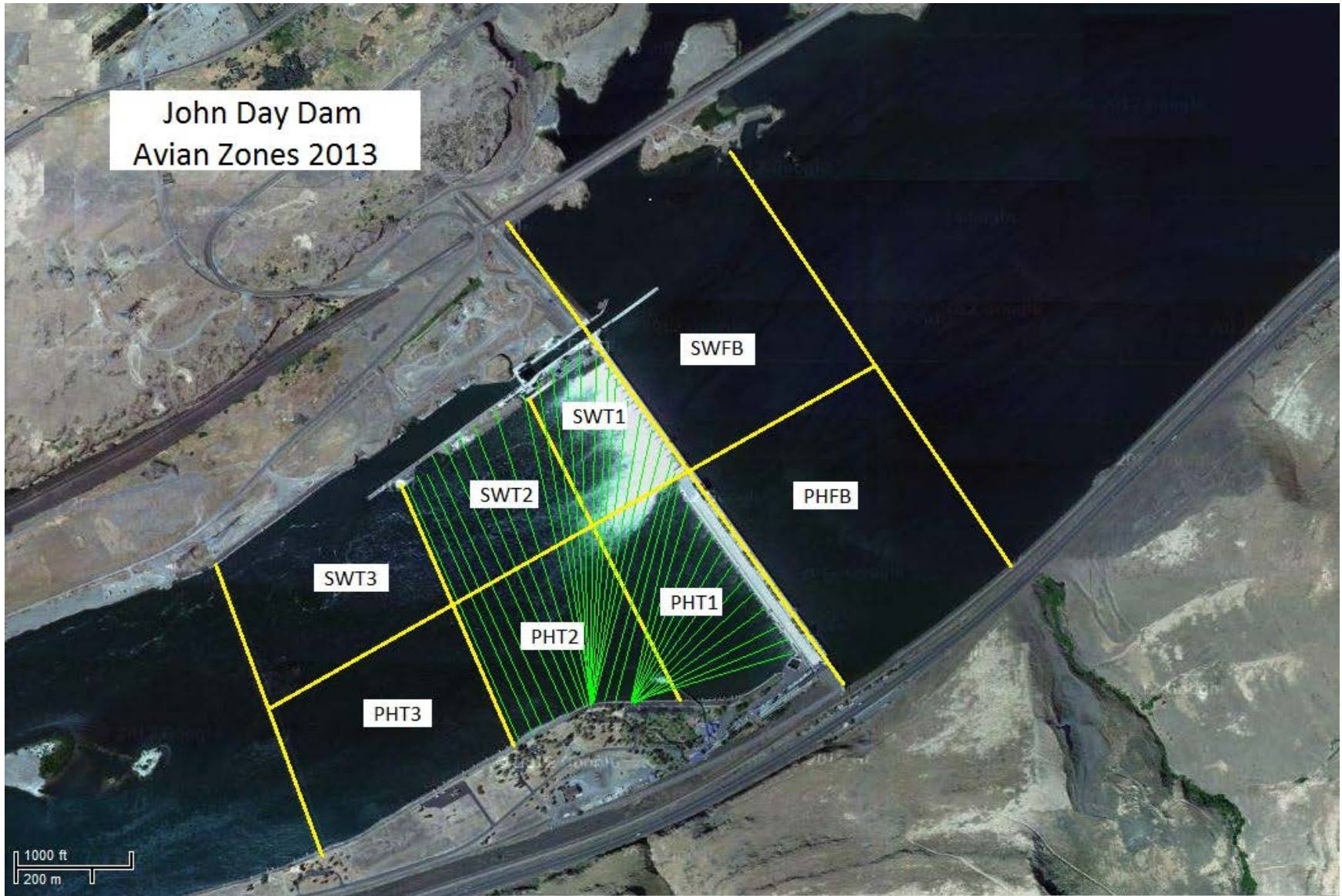








John Day Dam  
Avian Zones 2013



**John Day:**

	Temp:	Secchi:	Fallbacks:
Sun	64	5.0	
Mon	64	5.0	
Tues	64	5.0	
Wed	63	5.0	
Thur	63	5.0	
Fri	62	5.0	
Sat	62	5.0	
AVG:	<b>63</b>	AVG: <b>5.0</b>	AVG: <b>#DIV/0!</b>
			MAX: <b>#DIV/0!</b>
			MIN: <b>#DIV/0!</b>

	NE1	NE2	S.Ent	SE1	N.Ent	JBS Diff	Bay1	Bay19
Sun	8.0	8.0	1.7	8.0	1.5	4.5	2.0	1.5
Sun	8.0	8.0	1.5	8.0	1.5	4.5	1.8	1.4
Mon	8.3	8.3	1.6	8.2	1.6	4.7	1.6	1.6
Mon	8.5	8.5	1.5	8.3	1.5	4.6	1.8	1.4
Tues	9.1	9.1	1.5	8.8	1.4	4.6	1.8	1.3
Tues	8.7	8.7	1.5	8.6	1.5	4.5	1.8	1.4
Wed	8.6	8.5	1.5	8.6	1.5	4.5	1.7	1.4
Wed	8.9	8.9	1.4	8.5	1.6	4.6	1.7	1.4
Thur	8.4	8.4	1.5	8.3	1.5	4.6	1.8	1.4
Thur	8.5	8.3	1.5	8.3	1.5	4.6	1.8	1.4
Fri	8.2	8.1	1.5	8.2	1.5	4.6	2.0	1.6
Fri	8.9	8.7	1.5	8.7	1.5	4.5	1.8	1.3
Sat	8.4	8.4	1.5	8.4	1.6	4.6	1.8	1.4
Sat	8.2	8.0	1.6	8.1	1.6	4.6	1.9	1.5
AVG:	<b>8.5</b>	<b>8.4</b>	<b>1.5</b>	<b>8.4</b>	<b>1.5</b>	<b>4.6</b>	<b>1.8</b>	<b>1.4</b>